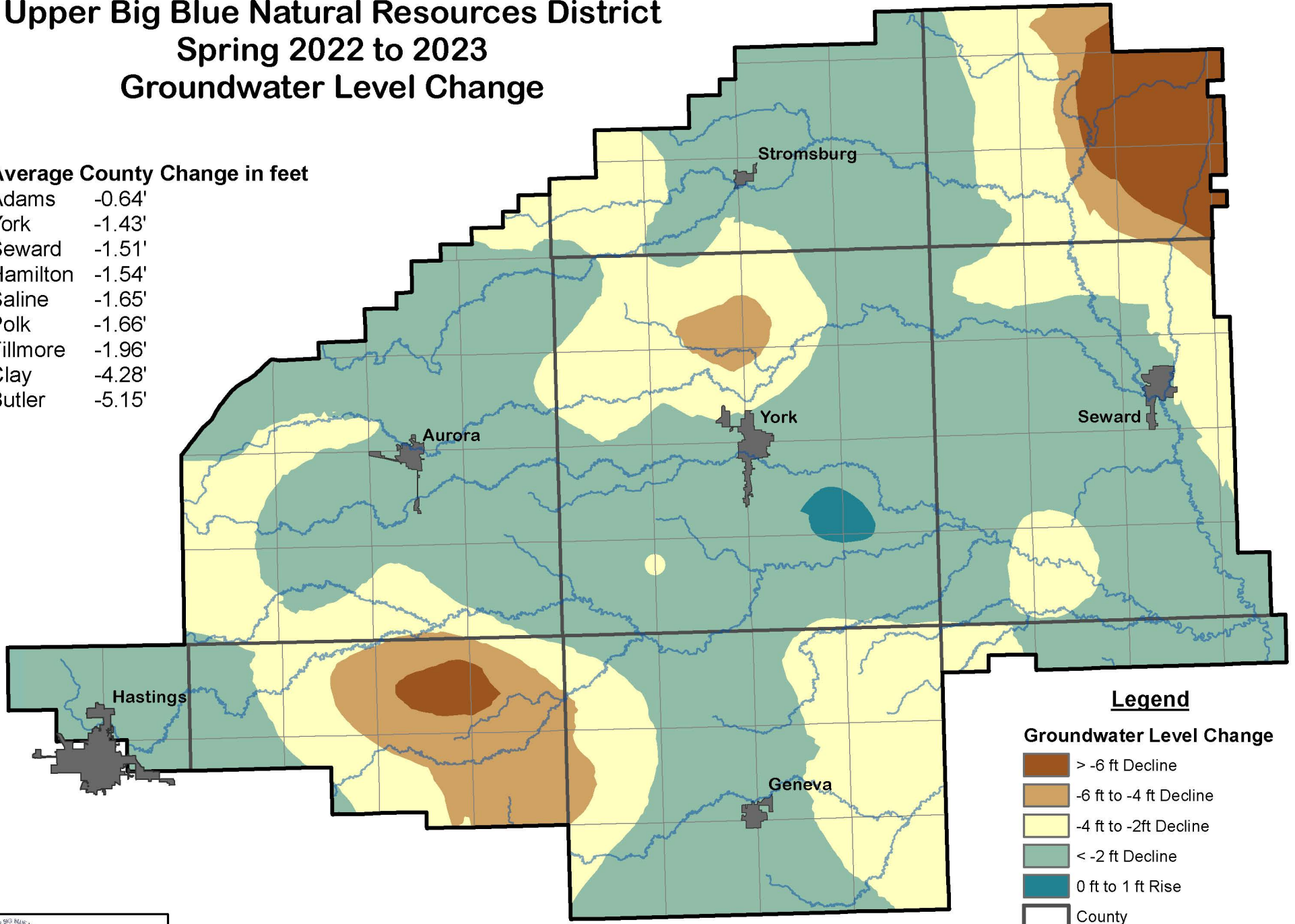


Upper Big Blue Natural Resources District Spring 2022 to 2023 Groundwater Level Change

Average County Change in feet

Adams	-0.64'
York	-1.43'
Seward	-1.51'
Hamilton	-1.54'
Saline	-1.65'
Polk	-1.66'
Fillmore	-1.96'
Clay	-4.28'
Butler	-5.15'



Legend

Groundwater Level Change

- > -6 ft Decline
- 6 ft to -4 ft Decline
- 4 ft to -2ft Decline
- < -2 ft Decline
- 0 ft to 1 ft Rise
- County
- River


Upper Big Blue NRD
 319 E. 25th Street
 York, NE 68467
 (402) 362-6601
www.upperbigblue.org

The average groundwater level change was -2.21 feet (decline)

