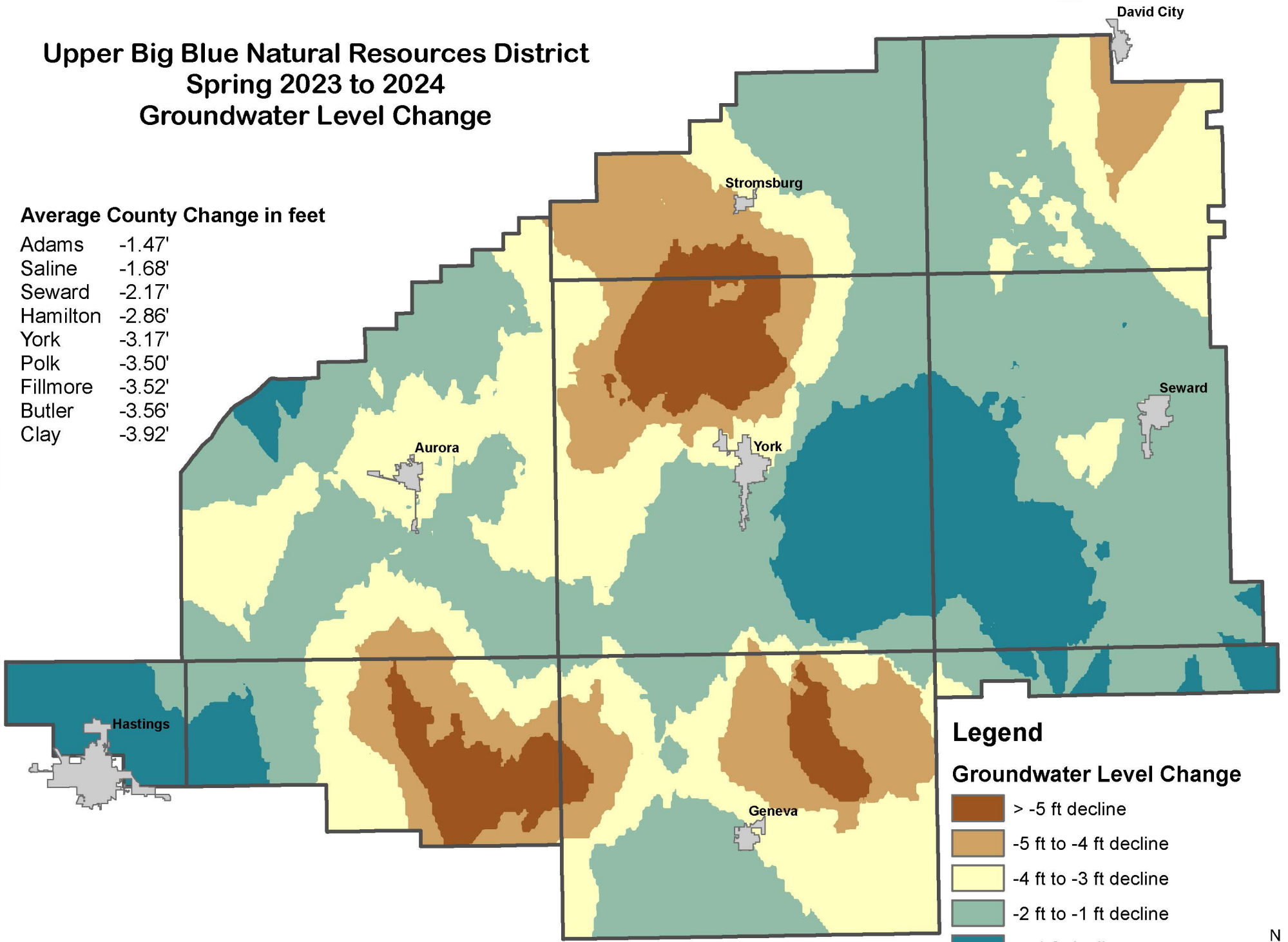


# Upper Big Blue Natural Resources District Spring 2023 to 2024 Groundwater Level Change

## Average County Change in feet

Adams	-1.47'
Saline	-1.68'
Seward	-2.17'
Hamilton	-2.86'
York	-3.17'
Polk	-3.50'
Fillmore	-3.52'
Butler	-3.56'
Clay	-3.92'



The average groundwater level change was -3.08 feet (decline)

